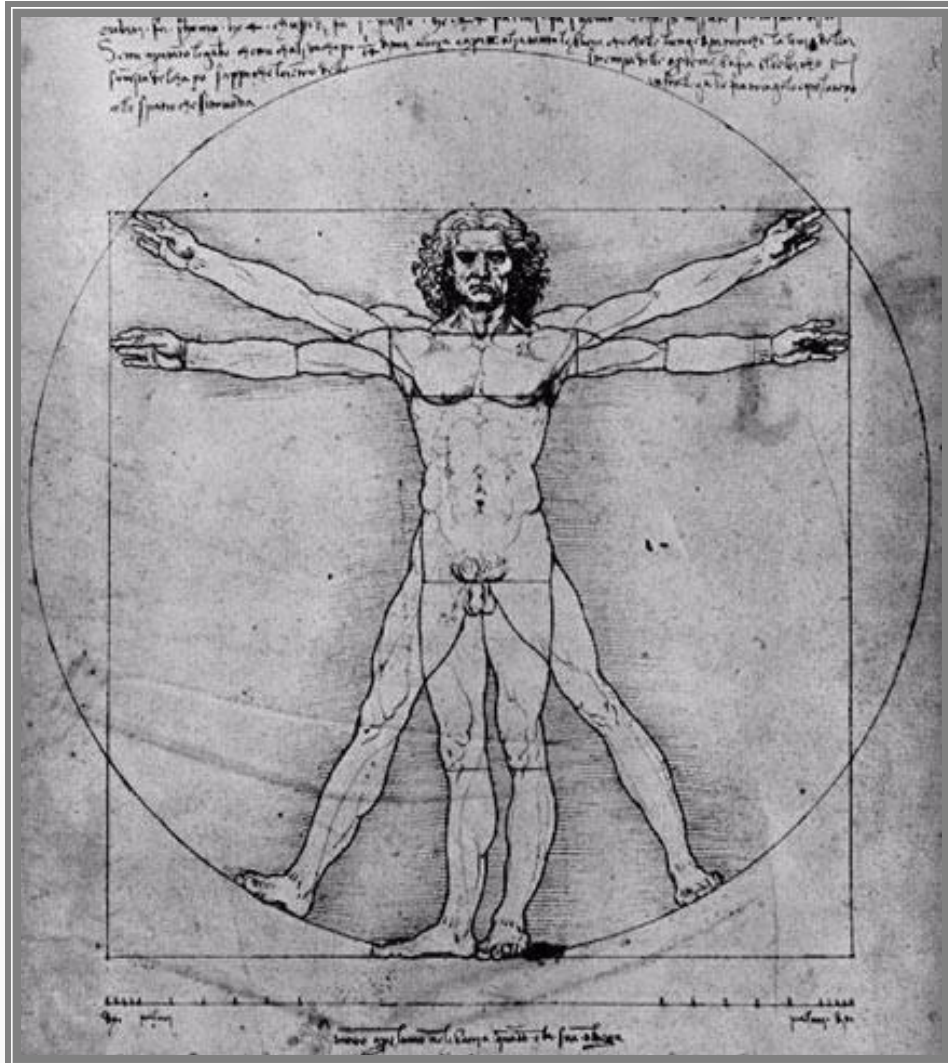




METRUX® 2.0.



SOFTWARE MEASUREMENT



METRUX® 2.0.: SOFTWARE MEASUREMENT

Metrix® 2.0 uses 3D Datas provided by 3D scanners in order to generate measures :

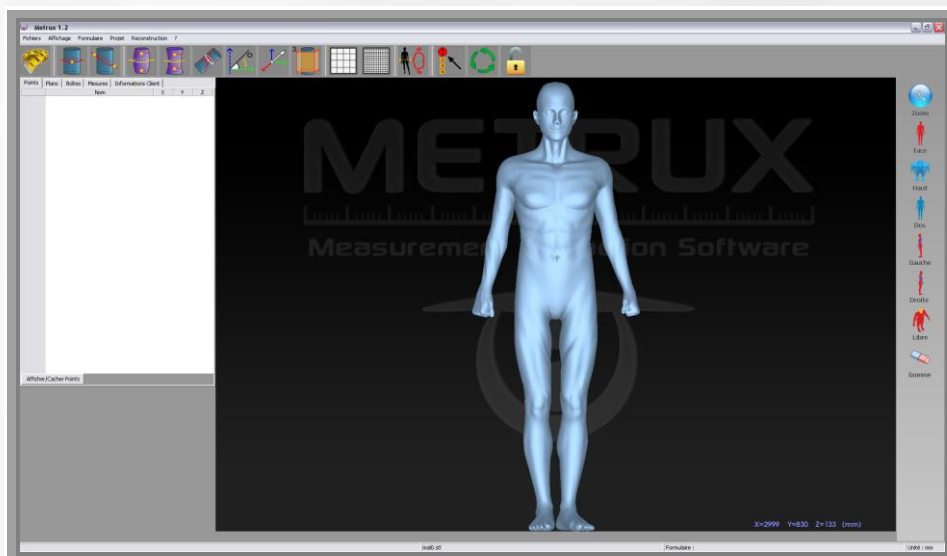
Medicine, ergonomic professionals but also Mannequins Manufacturers, 3D Movies Operators, Designers, professional of the customized garment and the fashion have now a simple, compact, economic, functional and modular tool in order to measure bodies and parts of bodies.



Metrix® 2.0. : a device thought in all details.

With numerous functionalities specially developed in our laboratories as an answer to the most demanding professionals, Metrix®2.0 becomes the indispensable tool for all those who are involved in 3D Body Applications.

Metrix® 2.0 Allows the measurement of lengths, angles, circles, volumes on all or part of the body.





METRUX® 2.0 IN DETAILS...



Reproduce exactly whatever action, forms, postures, ...

Used to determine precisely lengths, angles, circles, volumes.



Simplifies repetitive extractions through forms.

As the basis of a list of key points positioned manually, the software restores files measures under different formats.



Works on Windows XP, VISTA and SEVEN.

Accepts files in STL format.

Tables of measurements obtained can be exported and integrated into the databases / spreadsheet market.

METRUX® 2.0 : TECHNICAL DATAS

MINIMUM CONFIGURATION

Operating System	Window XP, Vista ou Seven
Processor	Dual Core 2 Ghz
RAM	2GB RAM
Video Card	256 MB

For a safe and correct use of Metrux 2.0., please read instruction manual before starting.



POWERED BY 3D QUEST

Technopôle Anticipa - 22300 LANNION

FRANCE

Tél : +33 (0)2 96 48 68 19

Fax : +33 (0)2 96 38 48 59

www.worux.com – marketing@3douest.com

3D Quest holds the right to change this commercial brochure without prior notice..

Edition 03 – 2011